

---

---

# Introduction to Caltech Library

Stephen Davison, Interim University Librarian

---

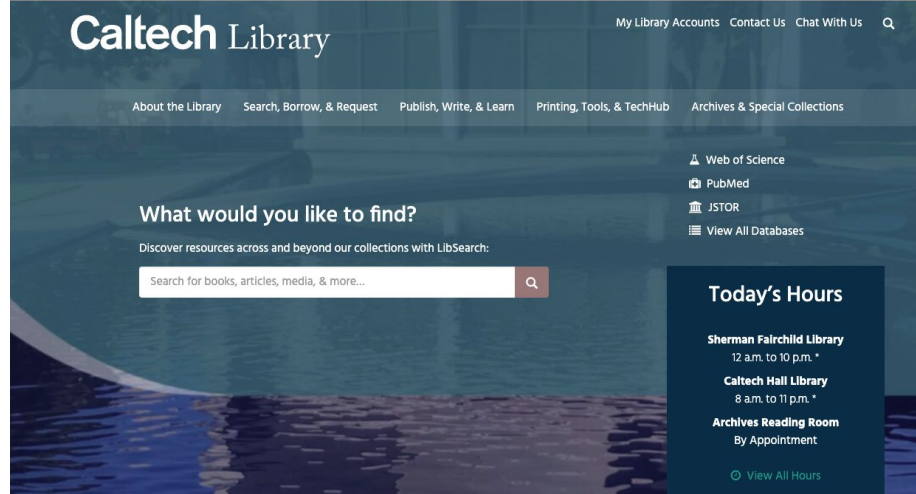
# Library Locations

Main Library: Sherman Fairchild Library (aka SFL)

Branch Libraries: Caltech Hall, Dabney, Geology, Cahill

Caltech Archives & Special Collections: Beckman Institute

Online: [library.caltech.edu](https://library.caltech.edu)



—

Looking for a space to write  
or work that's not your lab or  
your home? Try  
Caltech Hall 9th floor.



# Intro to Research Services

→ **Division Librarians**

Contact for any library-related questions.

→ **Research Data Support**

DMSPs, CaltechDATA, Data Consultations

→ **Open Access Support**

OA publishing discounts,  
transformative agreements,  
CaltechAUTHORS

---

# We also teach workshops on software and data tools.

(Want to share your expertise by teaching a workshop? We'd love to partner!)



## Upcoming Workshops

The Unix Shell (April 4-9)

Version Control with Git  
(April 29)

The Julia programming  
language (May)

Natural Language Processing  
and Models (May)

# Publishing Support

Caltech Library supports the publication of open access e-books and journals from individuals or research groups with a compelling idea and the text, data, and media files associated with the project.

## → Open Access E-Books

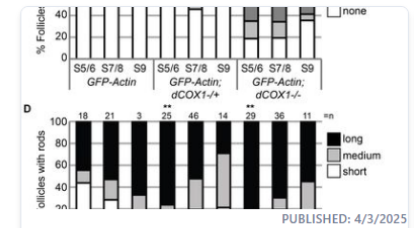
Content hosting, publishing tools, copyright assistance

## → Get a DOI or an ISBN

Self-service & custom DOIs, ISBNs for self-published books.

## → Register an ORCID

## microPublication Biology

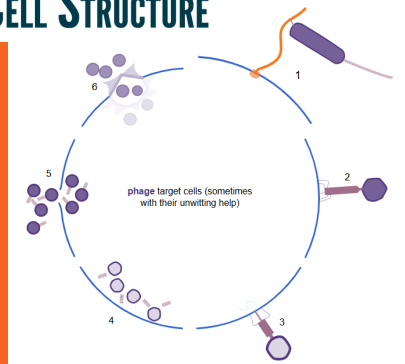


### NEW FINDING

**Prostaglandins limit nuclear actin rod formation during *Drosophila* oogenesis**

Tina L. Tootle

## ATLAS OF BACTERIAL AND ARCHAEAL CELL STRUCTURE



---

# Printing of all sorts at Caltech Hall.

(We have regular paper printers, a poster printer, 3D printing, and resin printing.)



## TechHub

Located on the first floor of Caltech Hall, the TechHub is a productive and creative space—home to our TechLab for 3D printing, the technology lending program, an Archives exhibition space, and our retail partnership with Vroman's Bookstore.



# Family Services

Immediate family members (spouses/domestic partners and children 15 years of age or older) of Caltech faculty, postdocs, and staff may apply for a library card by submitting this [registration form](#).

→ **Library Access**

Visit any library location.

→ **Borrow a book.**

Up to 5 books at one time.

→ **Volunteer**

Work in the Caltech Archives & Special Collections.



# Final Thoughts...

**DocuServe: you want it; they get it.**

<https://library.caltech.edu/borrow/docuserve> or  
[docuserve@library.caltech.edu](mailto:docuserve@library.caltech.edu)

**Online Tools**

iThenticate, Overleaf, LabArchives, & Zotero are all supported by the Library.

<https://library.caltech.edu/tech/tools>

**Need help? Just ask!**

[library@caltech.edu](mailto:library@caltech.edu)